



# maestro 100

Lite Ext

## Windows XP GPRS Connection Setup Guide

Rev. 00

## Revision history

Rev.	Date	Details	Originated by
00	12Dec 2007	First release	Wallace Lee

This manual is written without any warranty. **Maestro Wireless Solution Ltd.** reserves the right to modify or improve the product and its accessories which can also be withdrawn without prior notice.

Besides, our company stresses the fact that the performance of the product as well as accessories depends not only on the proper conditions of use, but also on the environment around the places of use.

**Maestro Wireless Solution Ltd.** assumes no liability for damage incurred directly or indirectly from errors, omissions or discrepancies between the modem and the manual.

# CONTENTS

CHAPTER 1	Introduction	2
CHAPTER 2	Configuring Maestro 100	2
CHAPTER 3	Adding a modem to Windows XP	3
CHAPTER 4	Disabling Maestro 100 special features	8
CHAPTER 6	Trouble shooting	8

## 1. Introduction

This document describes how to use Maestro100 / Lite / Ext and a PC with Windows XP to make a GPRS Internet Dial-up.

### 1.1 Setup requirement

The following items are necessary for the setup:

- Maestro 100 /Lite /Ext with PC cable and power supply
- PC with Windows XP installed, and a free RS-232 port
- A SIM card with GPRS service subscribed

## 2. Configuring Maestro 100

### 2.1 Setting up HyperTerminal

Refer to Chapter 2 and 3 of **Maestro 100 USER GUIDE**, set up Maestro 100 and Windows XP HyperTerminal. Make sure the modem is ready to receive commands.

### 2.2 Setting serial port speed

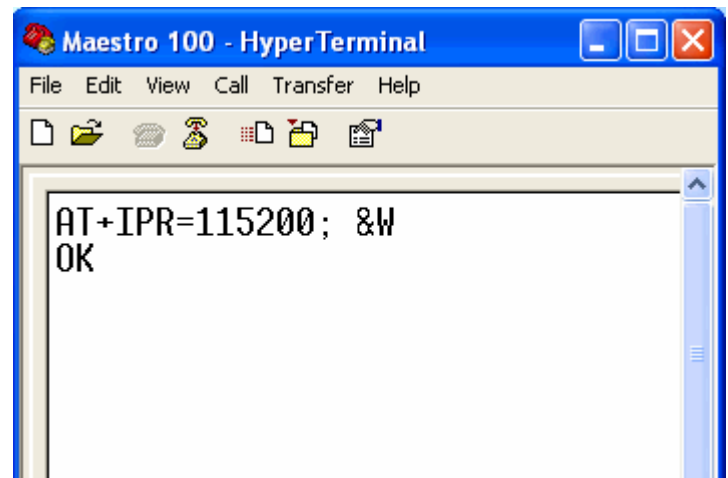
On the HyperTerminal, enter command :  
**AT+IPR=115200; &W<ENTER>**

Note: after entering this command the modem serial port speed will be permanently set at 115200bps.

Now you can close the HyperTerminal

\* If your modem has been configured to 115200bps already before, skip this step.

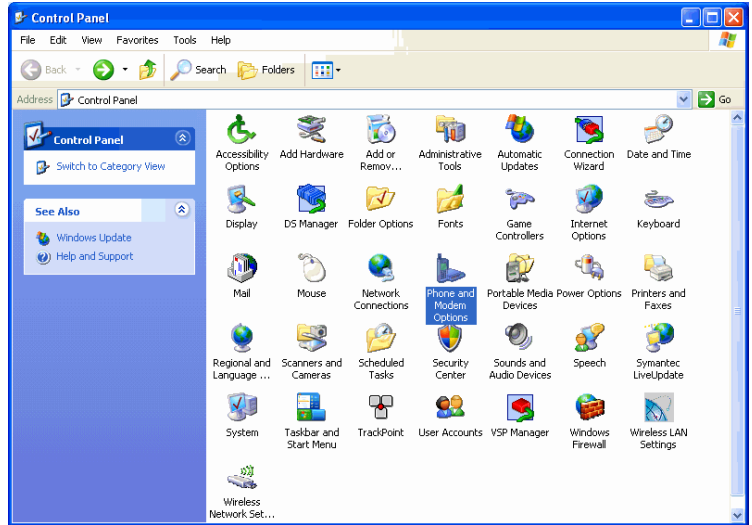
\* If you modem has running special feature (e.g. wipSoft or Maestro Smart Pack), please disable it first (see chapter 6)



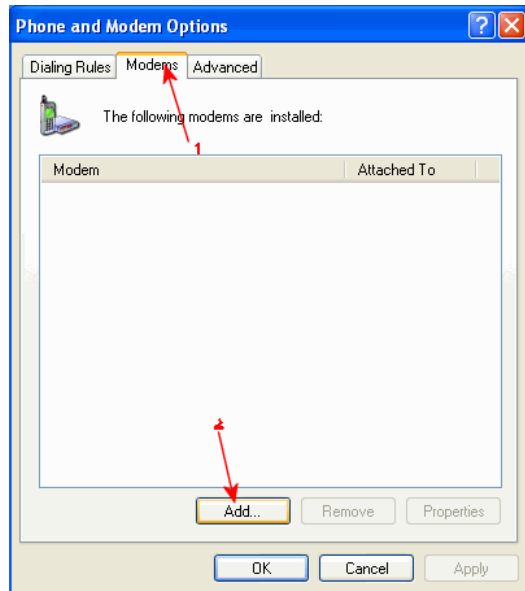
### 3. Adding a modem to Windows XP

3.1 On Windows XP, Choose “**Start**”, then choose ‘Control Panel’ folder

3.2 Double click the ‘**Phone and Modem options**’ icon



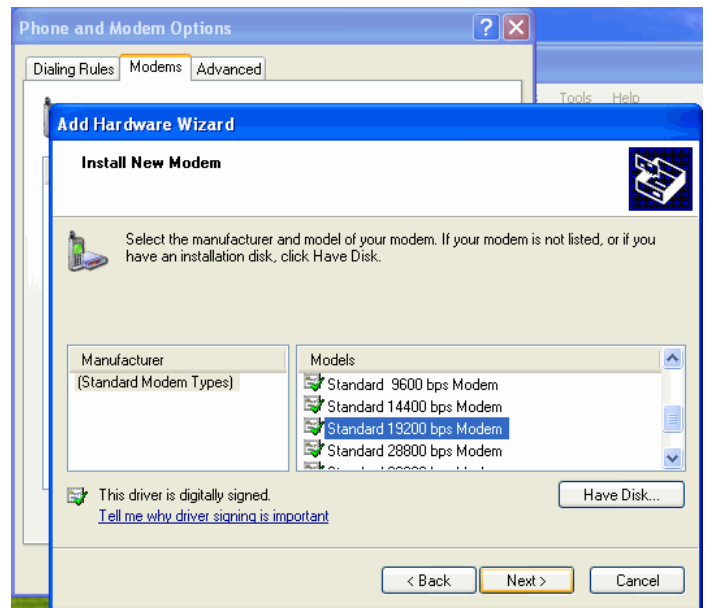
3.3 On ‘**Phone and Modem Option**’ window choose ‘Modem’ tab and click ‘**Add**’ button



3.4 On ‘**Install New Modem**’ dialogue box, click ‘**Don’t detect my modem**’. Then press ‘**Next**’.

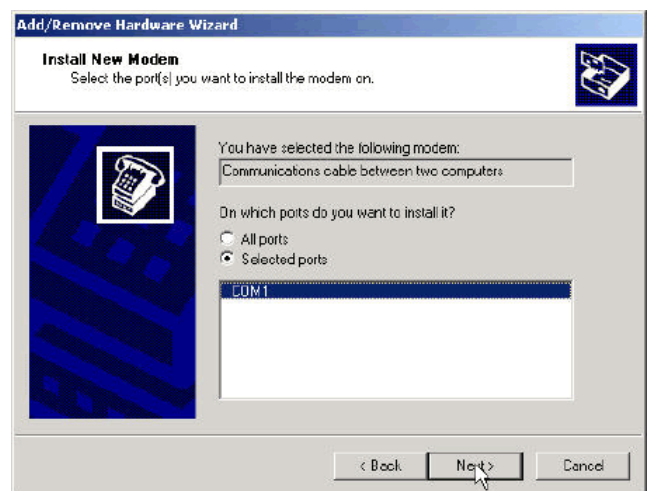


3.5 Choose 'Standard 19200bps Modem', then press 'Next'

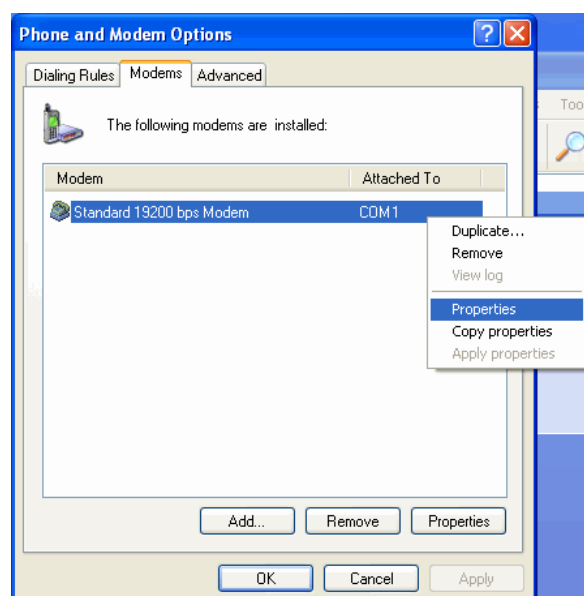


3.6 Choose the COM port where the Maestro 100 connected, then press 'Next'.

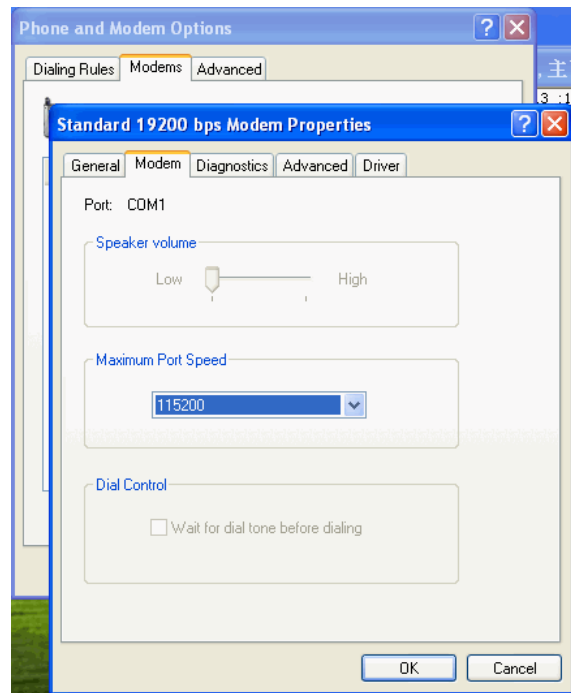
Now the modem has been installed. You can press 'OK'.



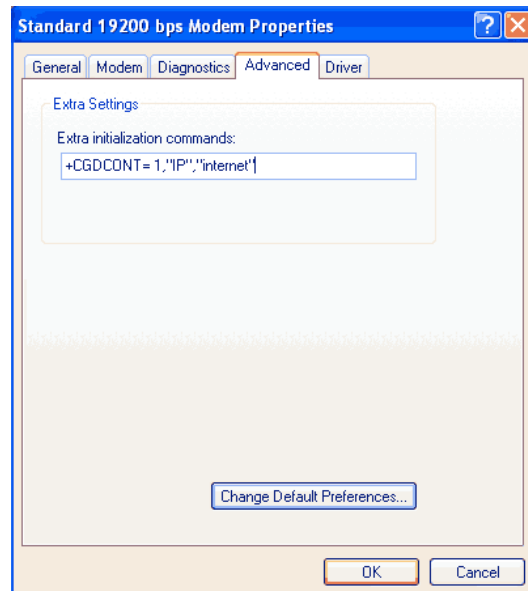
3.7 Then on the "Modem" page, right click the modem installed and choose "Properties"



3.8 In Properties page choose “**Modem**” tab, then set the “**Maximum Port Speed**” to **115200**.



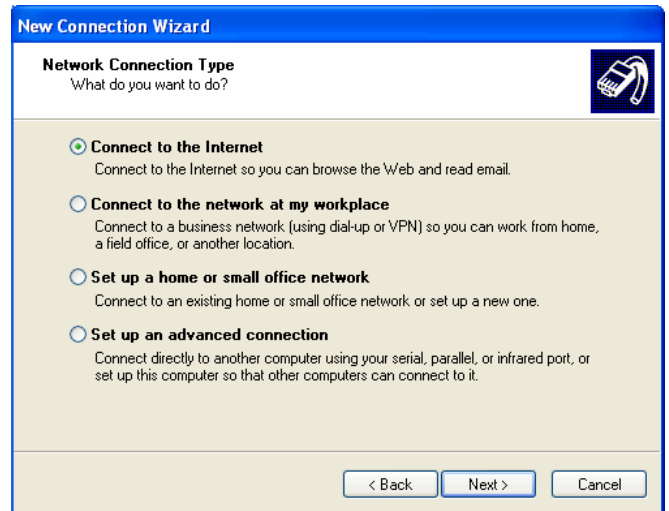
3.9 Click the ‘**Advanced**’ tab, on ‘**Extra initialization commands**’ field enter ‘**+CGDCONT= 1,”IP”,,”internet**’, where ‘internet’ is the APN of the GRPS network (check with your network operator for correct APN), then press ‘**OK**’



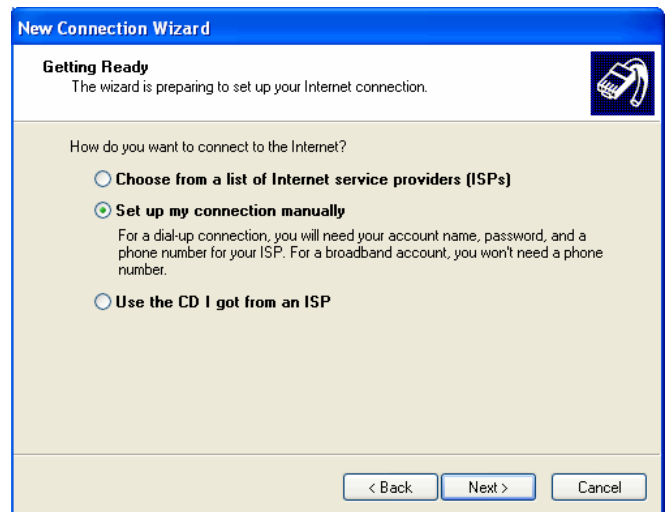
## 4. Making up a Dial-up Networking

4.1 On Windows 98, go to '**Accessories**' → '**Communication**' → '**New Connection Wizard**'

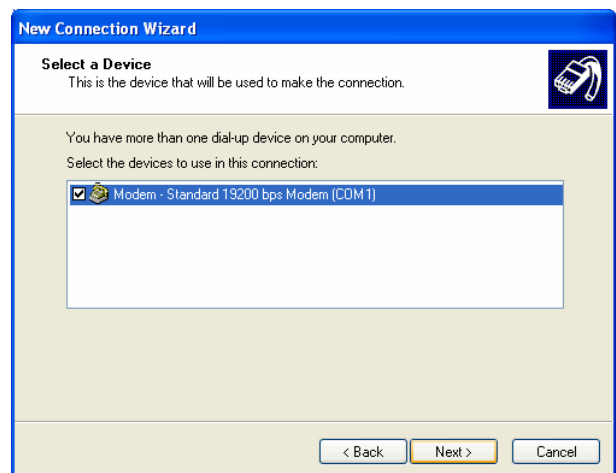
4.2 On **New Connection Wizard** window choose '**Connect to the Internet**' and then press "**Next**"



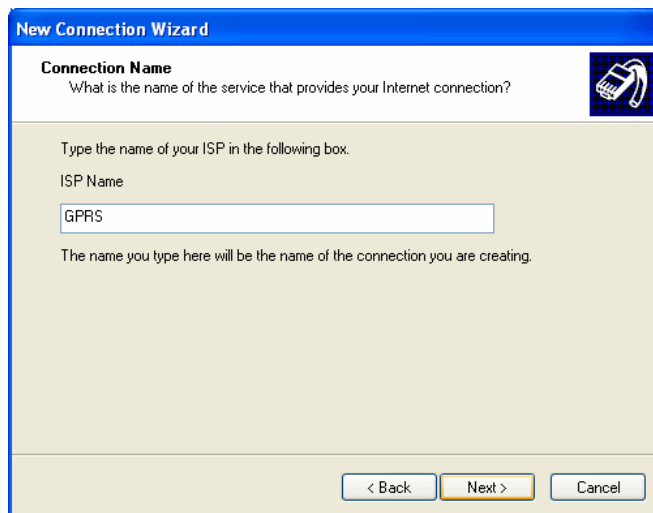
4.3 Choose '**Set up my connection manually**', then press '**Next**'



4.4 Select the '**19200 bps modem**' and press '**Next**'.



4.5 Type the name of the dial-up profile as you want then press **'Next'**.



4.6 Type the ISP's Phone Number as **'\*99\*\*\*1#'** then press **'Next'**.



4.7 Now a new Dial-up profile has been made. Now you can make a GPRS dail-up by double the GPRS icon. Remember to leave User name and password blank on connection (or refer to your network operator's instruction)



## 5. Disabling Maestro 100 special features

Maestro 100 offers special software support for special operations, e.g. 'wipSoft' or 'Maestro Smart Pack'. However these features will interfere with Windows Dial-up networking so it is suggested to disable those features first. So before setting up Maestro for Windows DUN, please enter the following commands:

**AT+WOPEN=0**

**AT&F**

These extra features will then be disabled. To re-enable it enter **AT+WOPEN=1**.

## 6. Trouble shooting

Problem	Action
Dial-up Networking reports modem is not responding	Check if the modem is ready, LED is flashing slowly  Check the serial port setting of Maestro and Windows modem device  Check connection cable  Check if the modem is used by another program
Dial-up not successful	Check if GPRS service ready from the network  Try entering command: AT+CGQREQ=1,0,0,3,0,0 by using HyperTerminal
Dial-up successful, but disconnect immediately	Check APN setting, consult your network operator
Dial-up successful, but cannot access the Internet	Check your Windows' Internet settings  Check signal strength Note : Dial-up Networking will NOT drop even signal is lost; it will try to recover soon